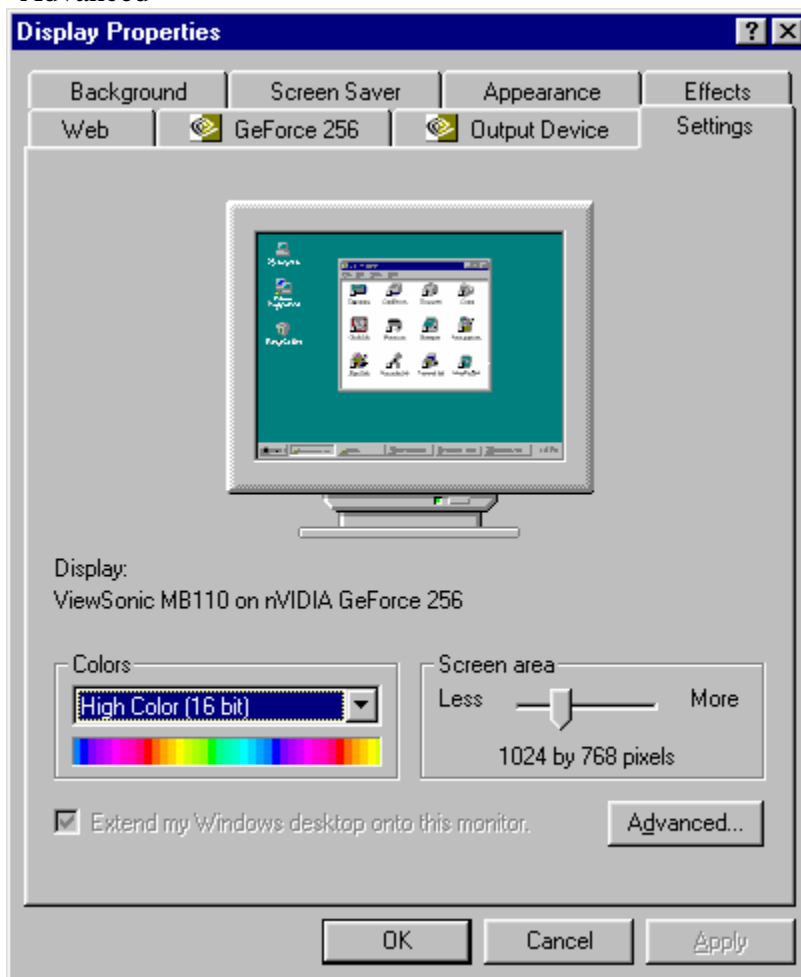


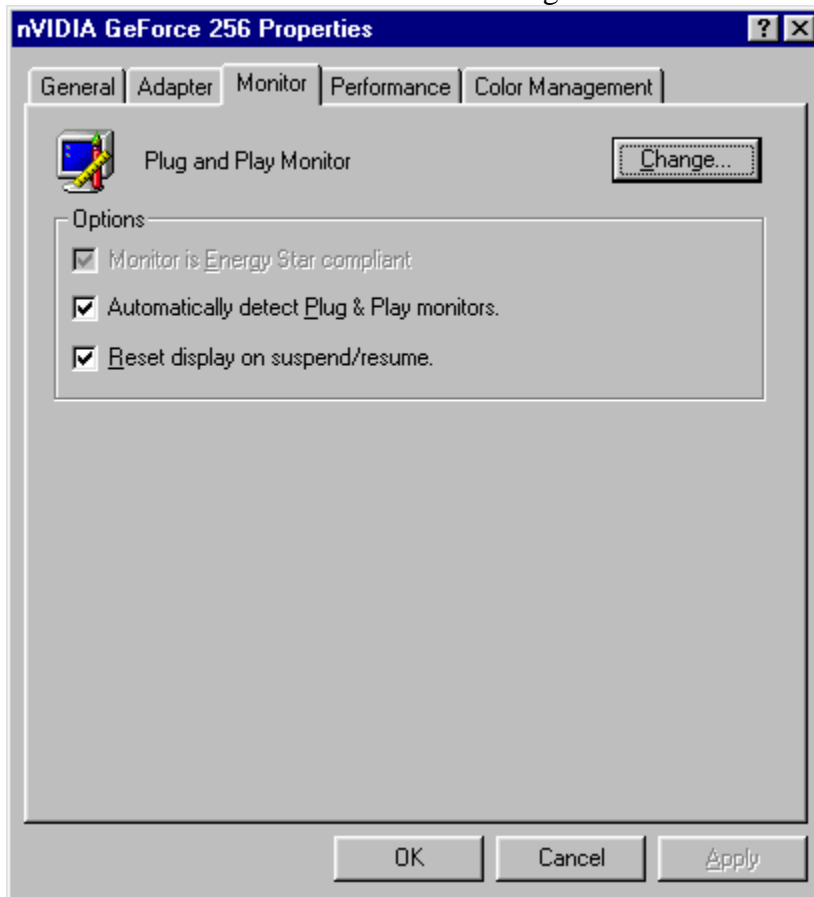


## Monitor Driver

1. Download filename: VSINF.EXE, double-click on the filename and it will self extract:
  - a) The INF files (defaults to c:\windows\inf)
  - b) The ICM files (defaults to c:\windows\system\color)
  - c) Installation should then be complete:
  - d) Restart the computer.
2. Click on “Start” -> “Settings” -> “Control Panel” -> “Display” -> “Setting tab” -> “Advanced”



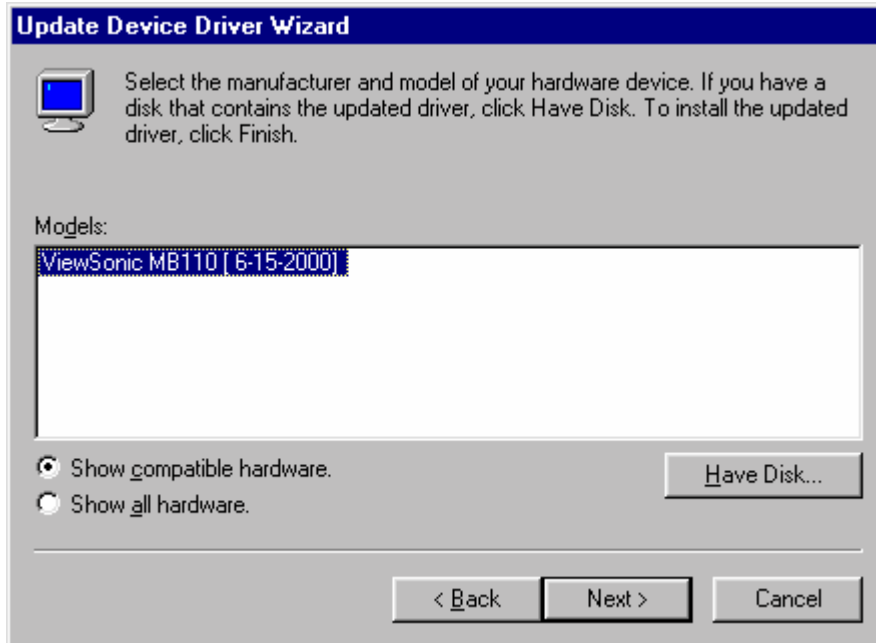
3. Click on “Monitor” and click on “Change”



4. An Update Device Driver Wizard will appear and you will need to click “Next”.

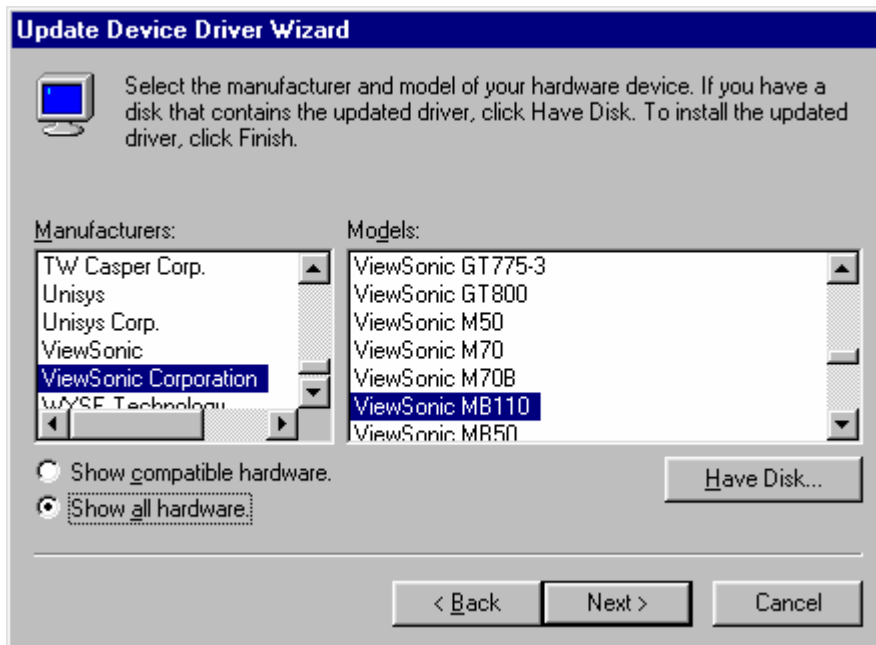


5. Then, you will want to select “Display a list of all drivers” and click on “Show All Hardware.”

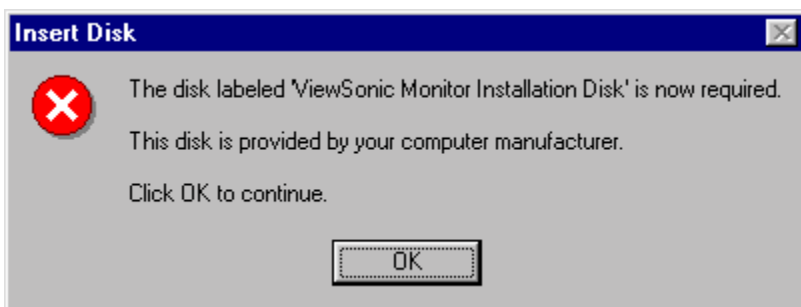


6. You will see two lists: one for Manufacturer and another for Models. Highlight ViewSonic Corporation and select the appropriate model on the right.

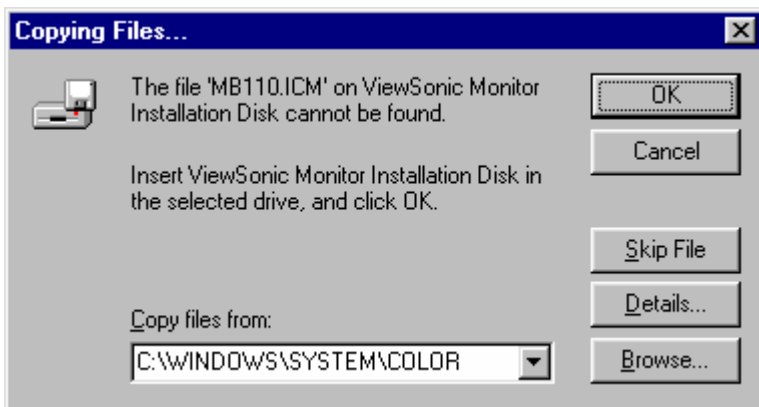
\* If the model is not listed, check “ViewSonic” under the Manufacturer.



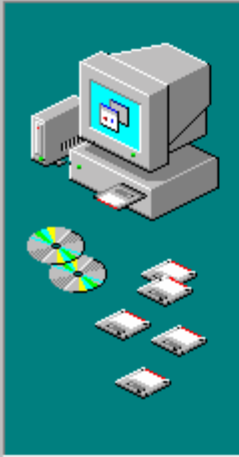
7. Click on “Next” and “Next” again, the computer will asks for the ViewSonic Drivers Disk, click “OK”.



8. On the next screen under copy files from enter “c:\windows\system\color”. Click on “OK” and then click “Finish”  
\*The directory may be different if Windows was installed at an alternative location.



**Update Device Driver Wizard**



ViewSonic MB110

Windows has finished installing the driver you selected for your hardware device.

< Back

Finish

Cancel